

CROSSROADS

1363-1393 Veterans Memorial Hwy
Hauppauge, NY 11788

CROSSROADS

HAUPPAUGE
PUBLIC LIBRARY

STIFEL

National Life
Group

STERLING
CAPITAL

MERCHANTS
INSURANCE GROUP

BANKERSLIFE

MassMutual

Dedicated
Parking Garage

VETERANS MEMORIAL HWY

CRA REALTY

COMMERCIAL REAL ESTATE ADVISORS



Property Highlights

Be a Part of Crossroads North Office Campus

Established four building (214,000 SF) office/medical campus provides the perfect business identity in a convenient Hauppauge location

Over 950' Feet of Frontage

At the lighted intersection of Veterans Memorial Highway and Spartan Ln., the campus is 1/2 mile north of Exit 57 from the Long Island Expressway (I-495)

Area Conveniences Nearby

Walking distance to grocery, gym and restaurants with additional conveniences less than 1 mile away, just north of I-495, and the MacArthur Airport is a quick drive away

Surrounded by Numerous Area Conveniences



North Shore Farms

DUNKIN'

CHASE



FRIDAYS

Walmart



New York Community Bank
Member FDIC

For more info, click on logo 

Aaron Smiles | 631.599.3344 | aaron@cra-realty.com

This information has been obtained from sources believed reliable. We have not verified it and make no guarantee about it.

Northwest Facing Aerial



Northeast Facing Aerial

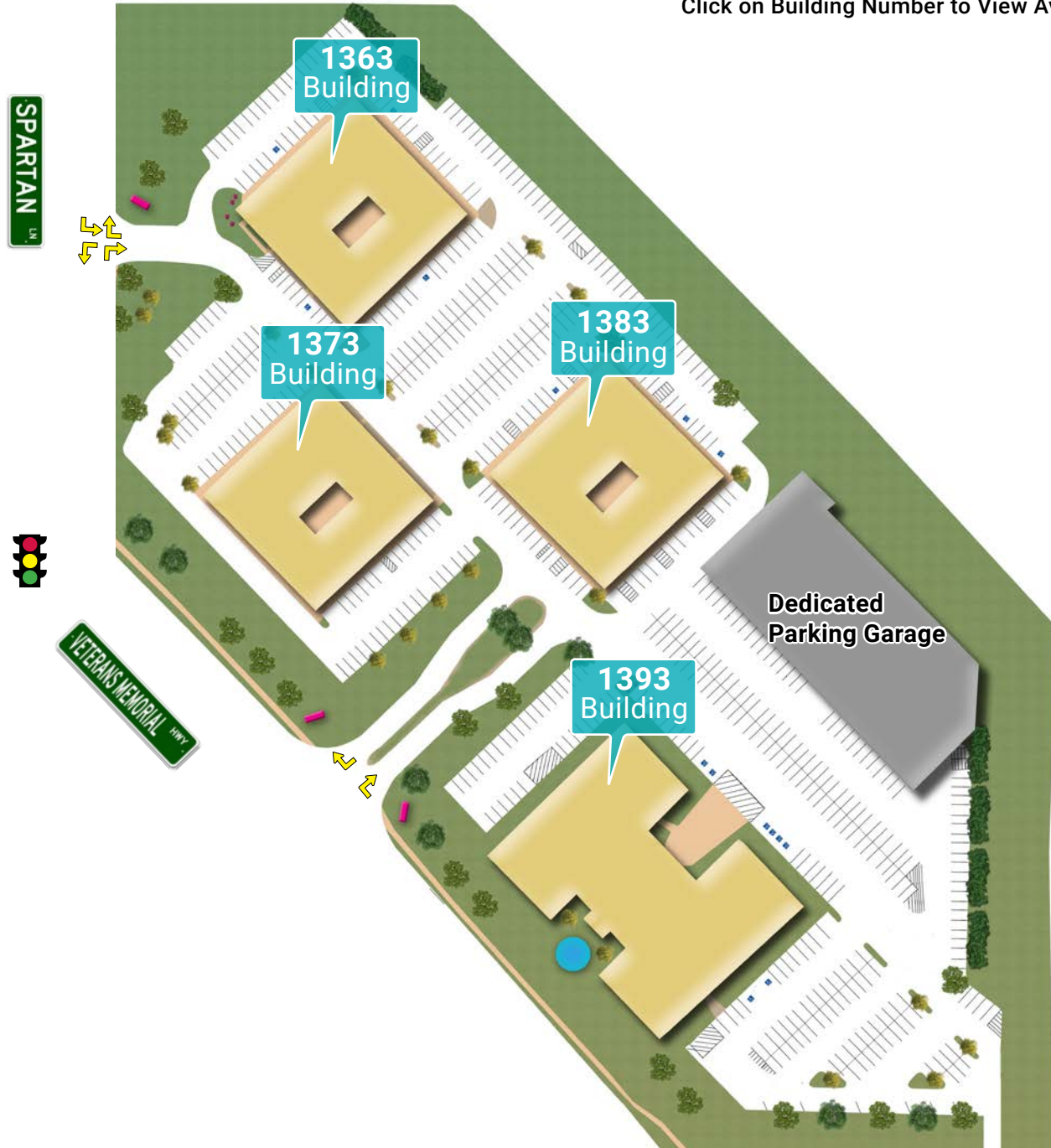


West Facing Aerial

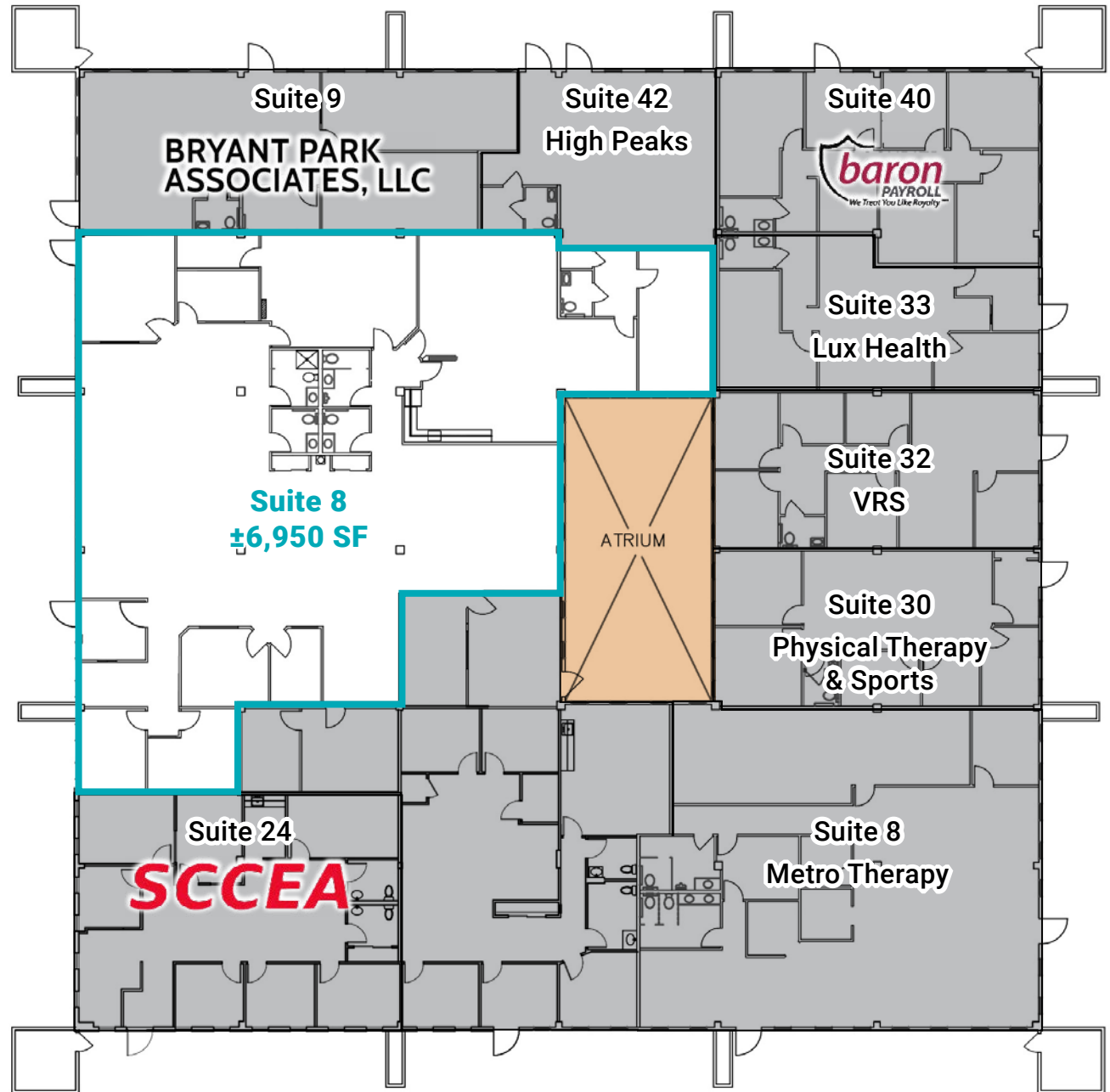


Site Plan

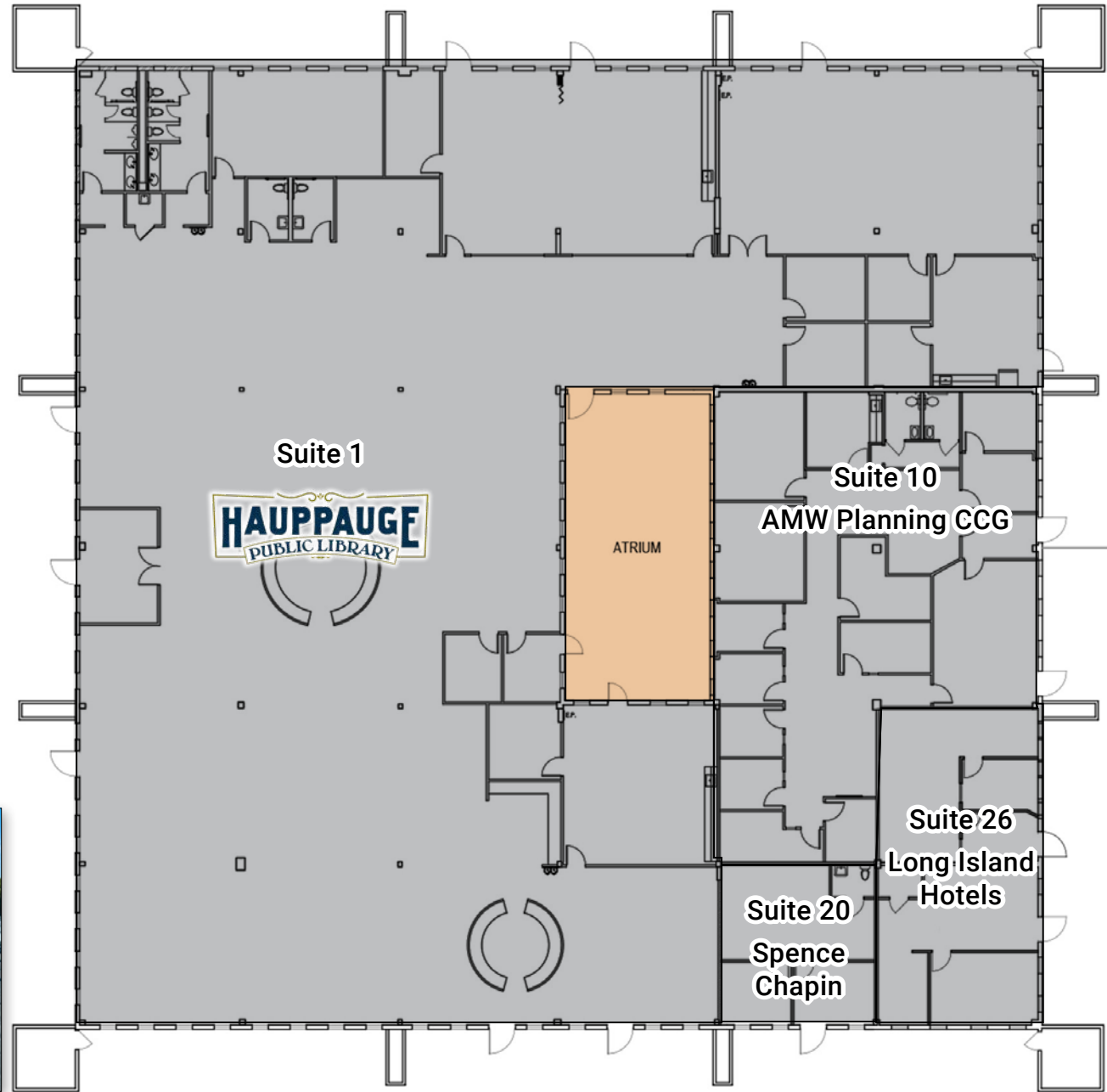
Click on Building Number to View Availability



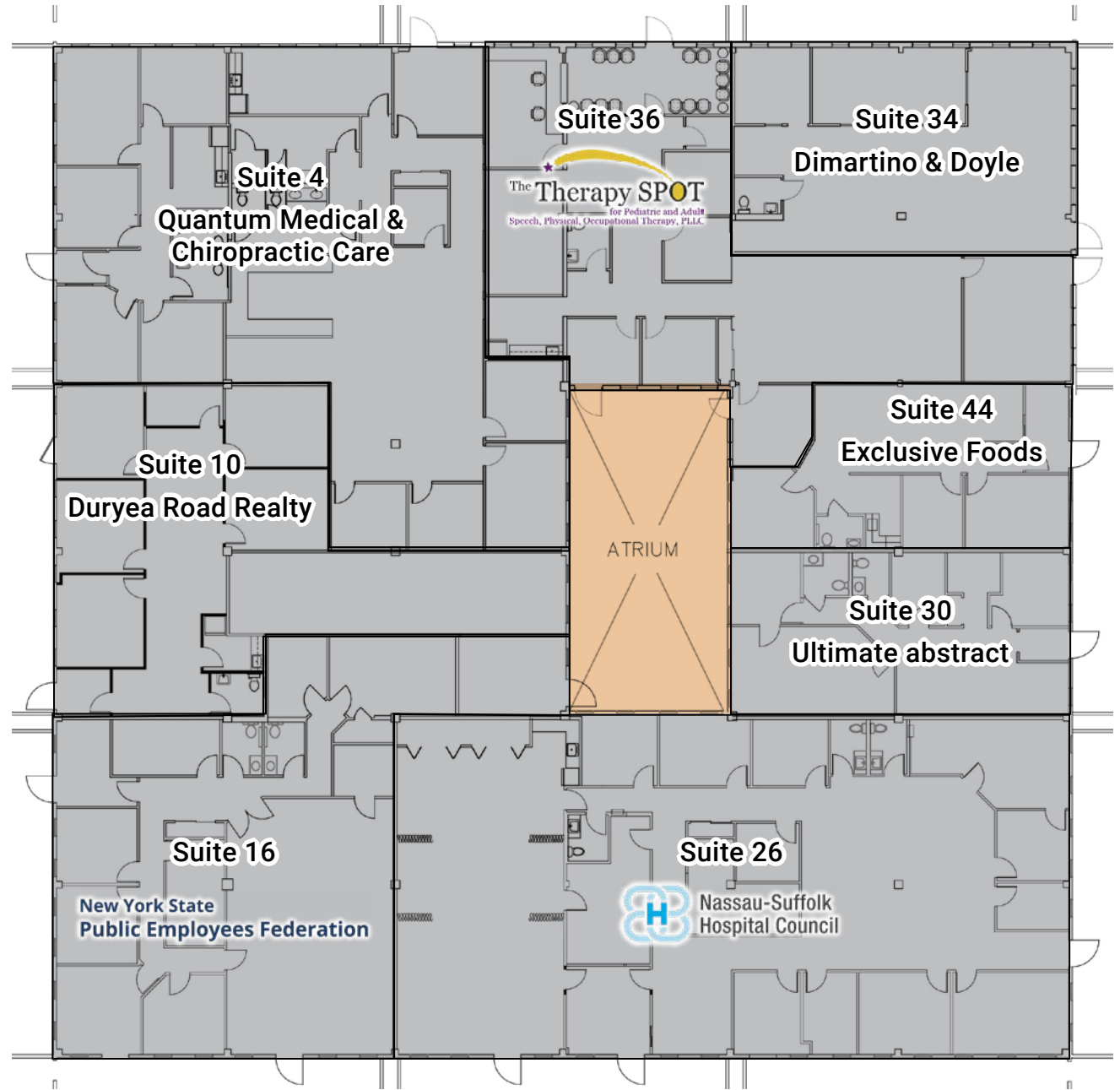
Building 1363



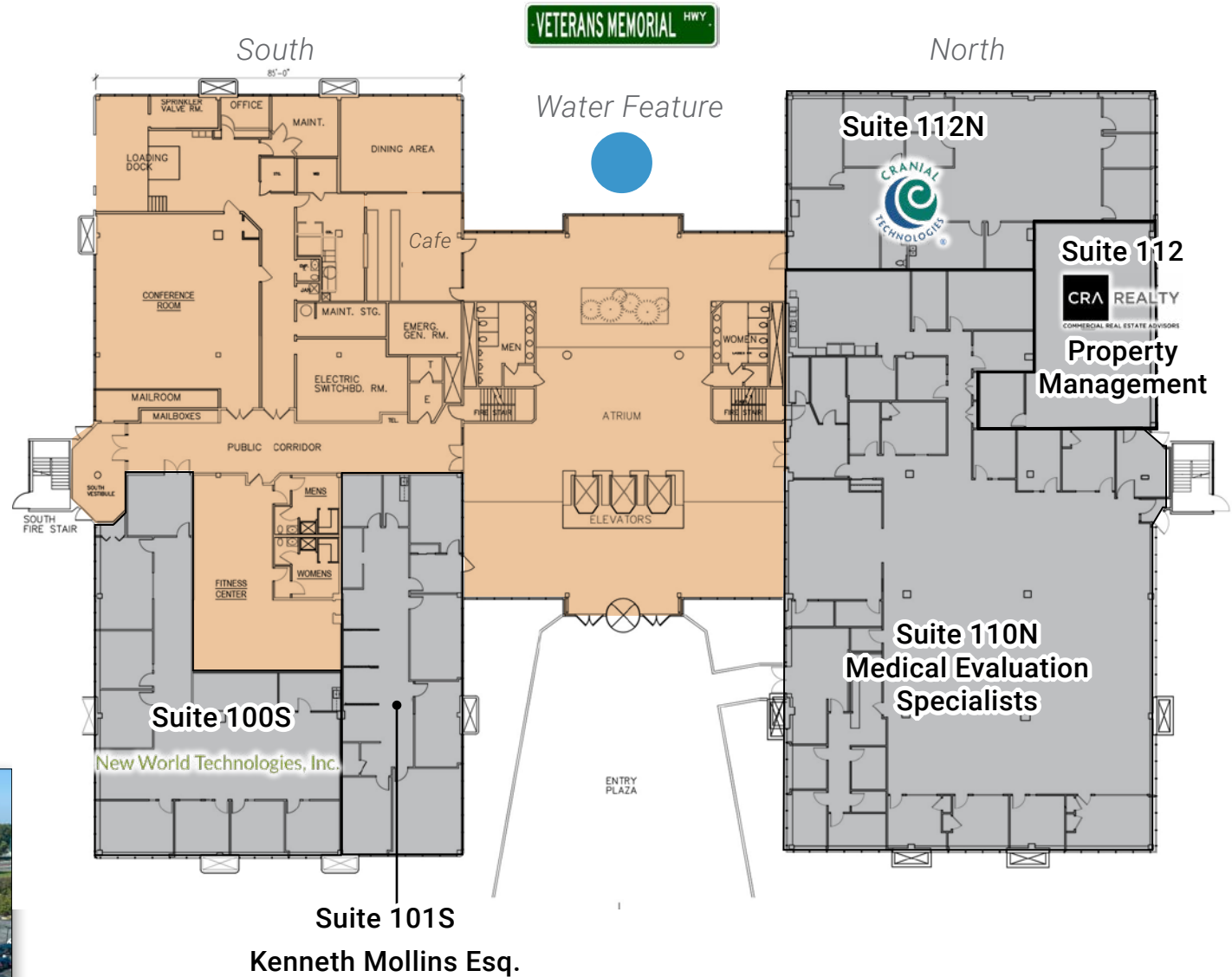
Building 1373



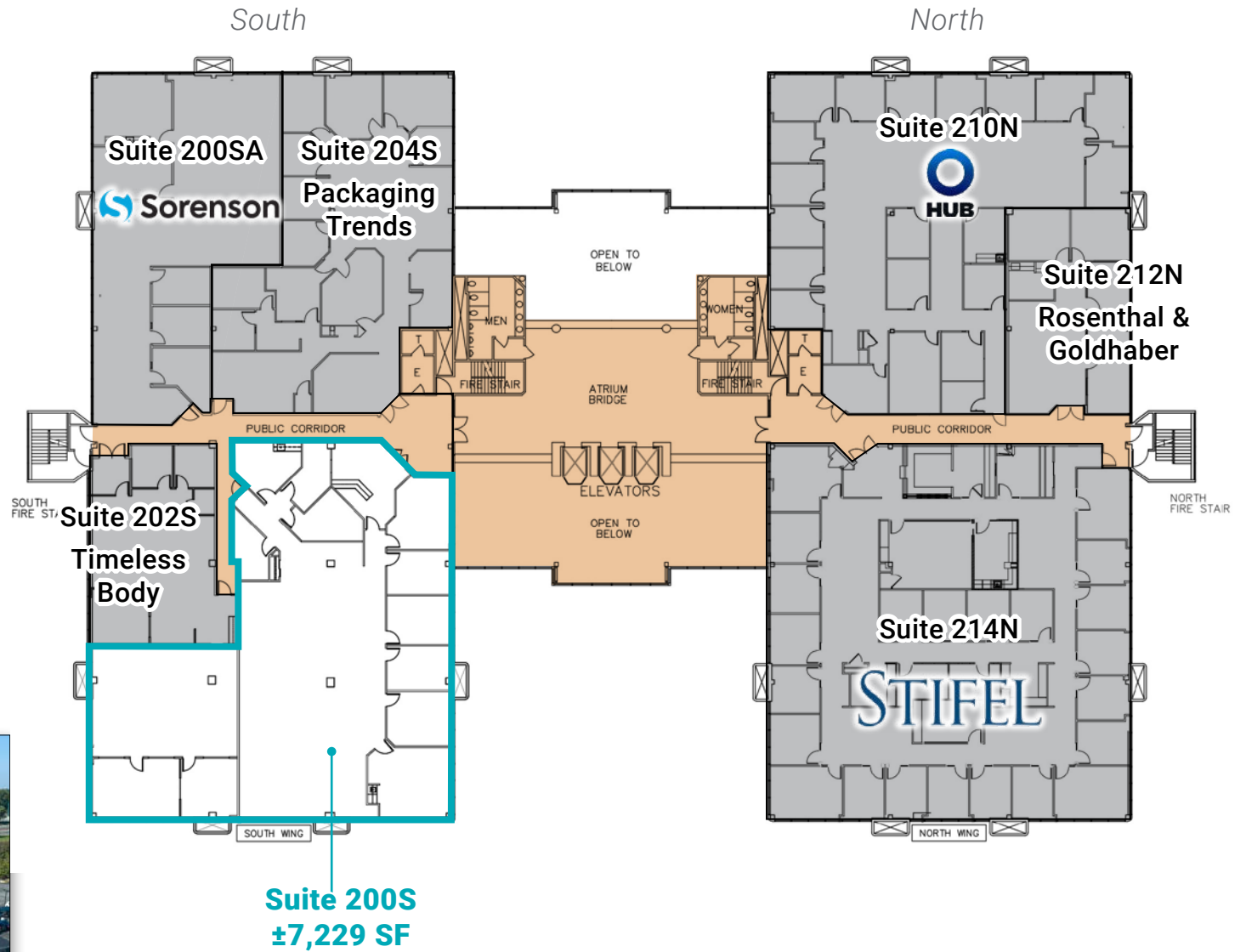
Building 1383



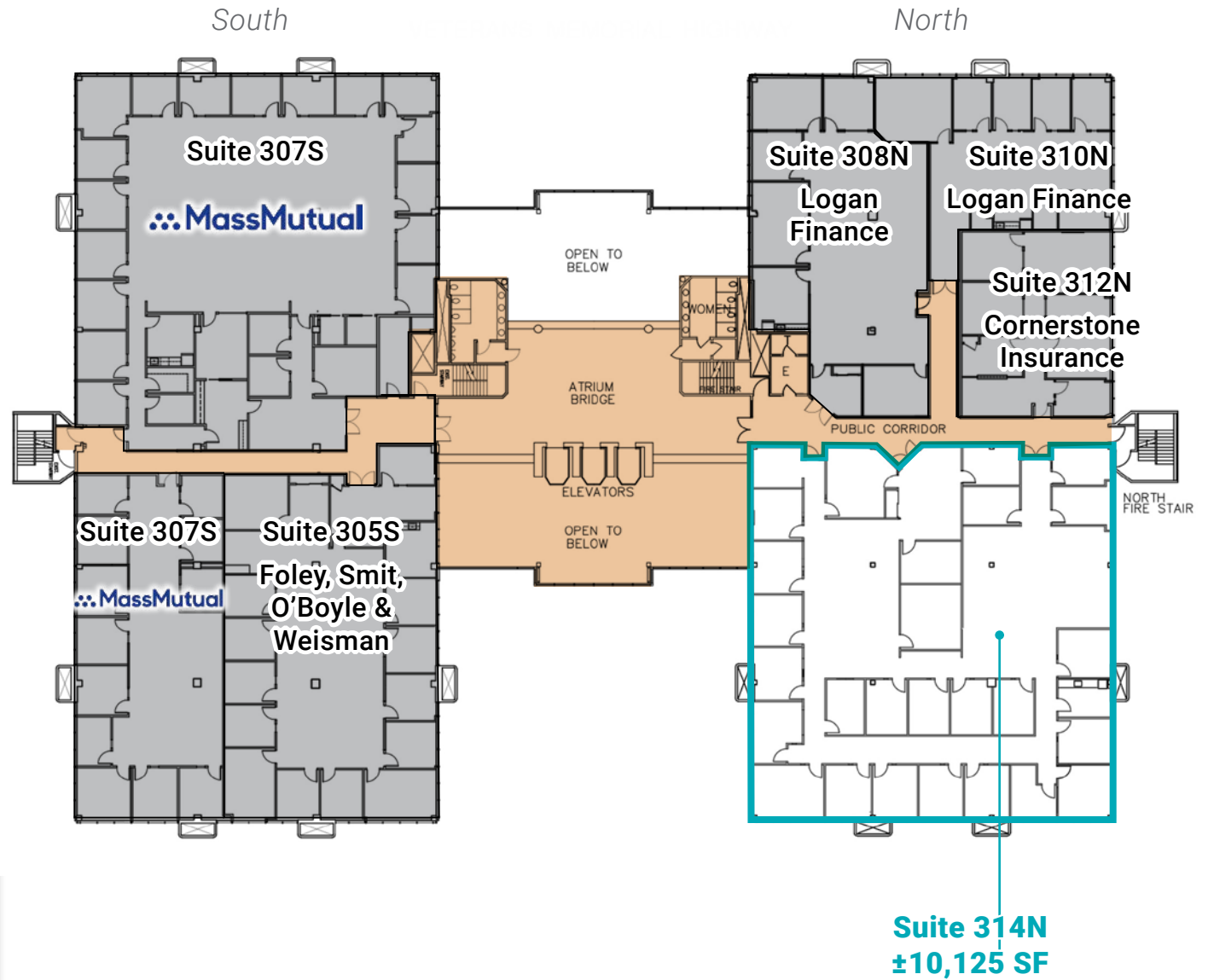
Building 1393 (1st Floor)



Building 1393 (2nd Floor)



Building 1393 (3rd Floor)



Building 1393 (4th Floor)

