

# CROSSROADS

1707-1797 Veterans Memorial Hwy  
Islandia, NY 11749



CROSSROADS

LBI  
Long Island Builders Institute, Inc.

Life's WORC

randstad  
technologies

FLUSHING  
Commercial • Business • Consumer Bank

HKS Helen Keller SERVICES

FAMILY OF KIDZ

RUBIN & ROTHMAN  
ATTORNEYS AT LAW

Redevelopment  
Medical/Retail Pad Site

VETERANS MEMORIAL HWY

454

CRA REALTY  
COMMERCIAL REAL ESTATE ADVISORS



# CROSSROADS



## Property Highlights

### Be a Part of Crossroads South Office Campus

Established nine building (182,866 SF) office/medical campus provides the perfect business identity with opportunities for building signage

### Over 1,300 Feet of Frontage

At the lighted intersection of Veterans Memorial Highway and Blydenburgh Rd., the campus offers seven access points and is 1/8 mile south of Exit 57 on the Long Island Expressway (I-495)

### Proven Trade Area

Numerous conveniences close by including banks, restaurants, gym and MacArthur Airport and is surrounded by dense residential

### Surrounded by Numerous Area Conveniences



For more info, click on logo  LoopNet™

Aaron Smiles | 631.599.3344 | [aaron@cra-realty.com](mailto:aaron@cra-realty.com)

This information has been obtained from sources believed reliable. We have not verified it and make no guarantee about it.



# Southwest Facing Aerial





# Northeast Facing Aerial





# Site Plan



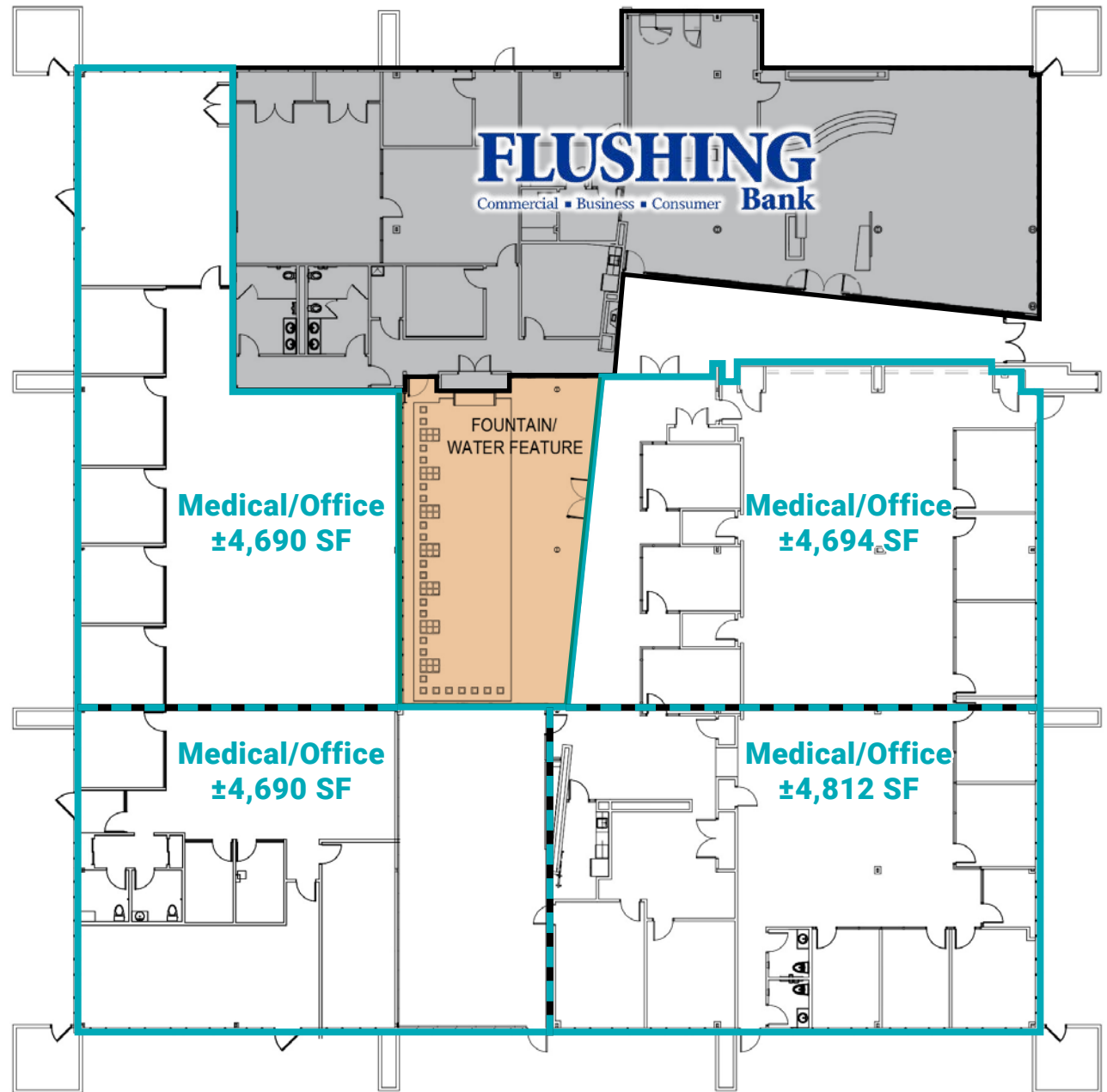
Click on Building Number to View Availability



Aaron Smiles | 631.599.3344 | aaron@cra-realty.com

This information has been obtained from sources believed reliable. We have not verified it and make no guarantee about it.

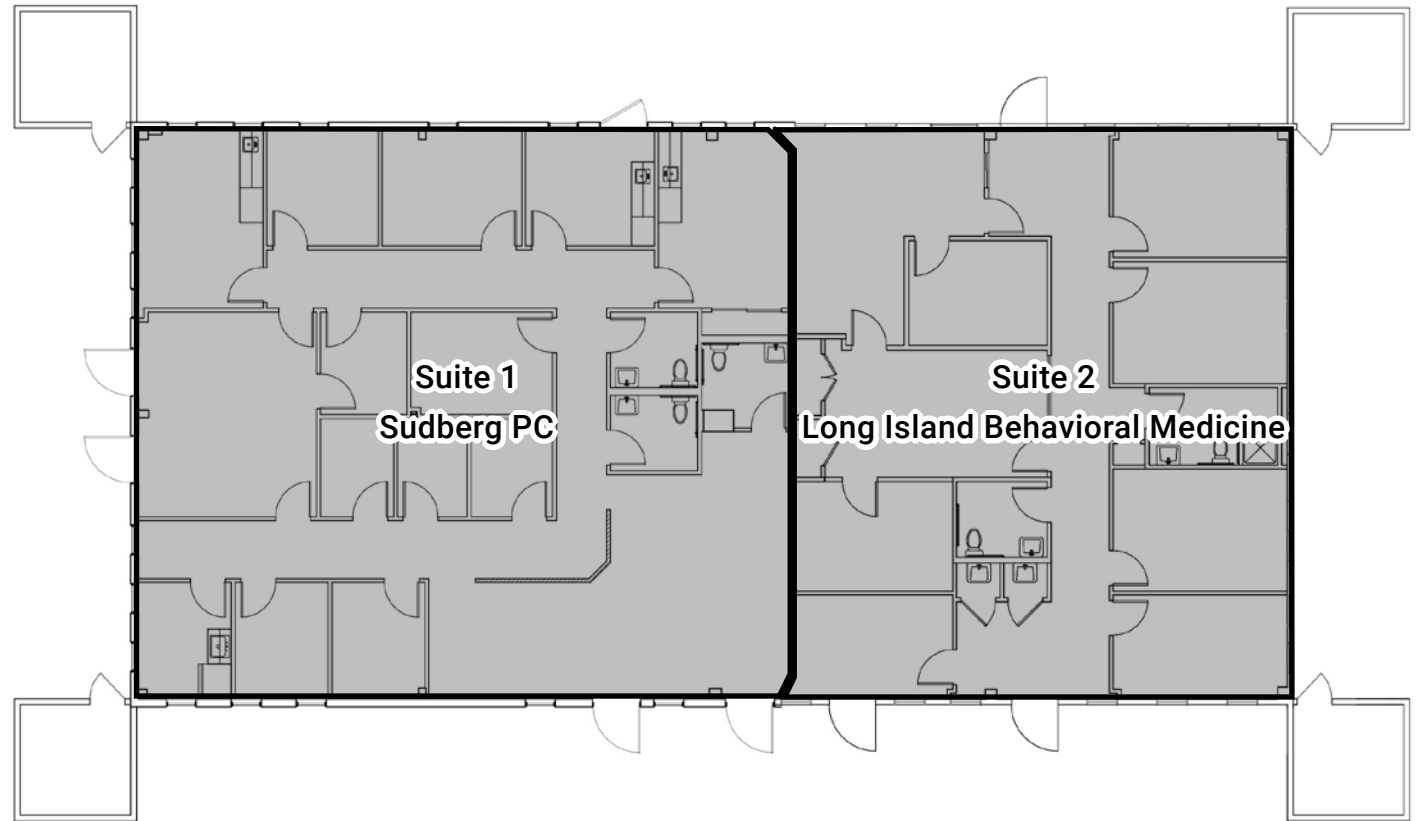
# Building 1707



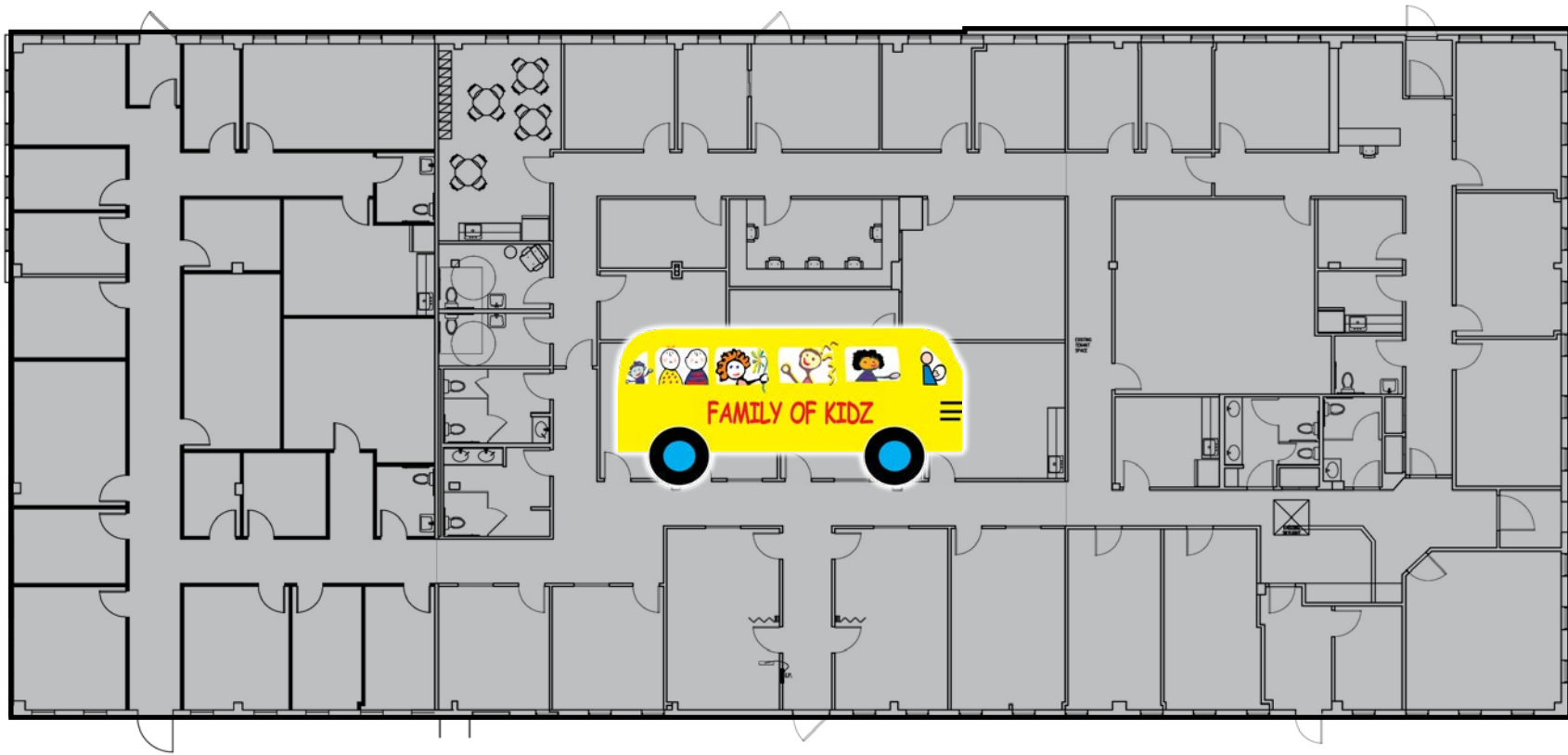
Proposed demising plan



# Building 1717



# Building 1737

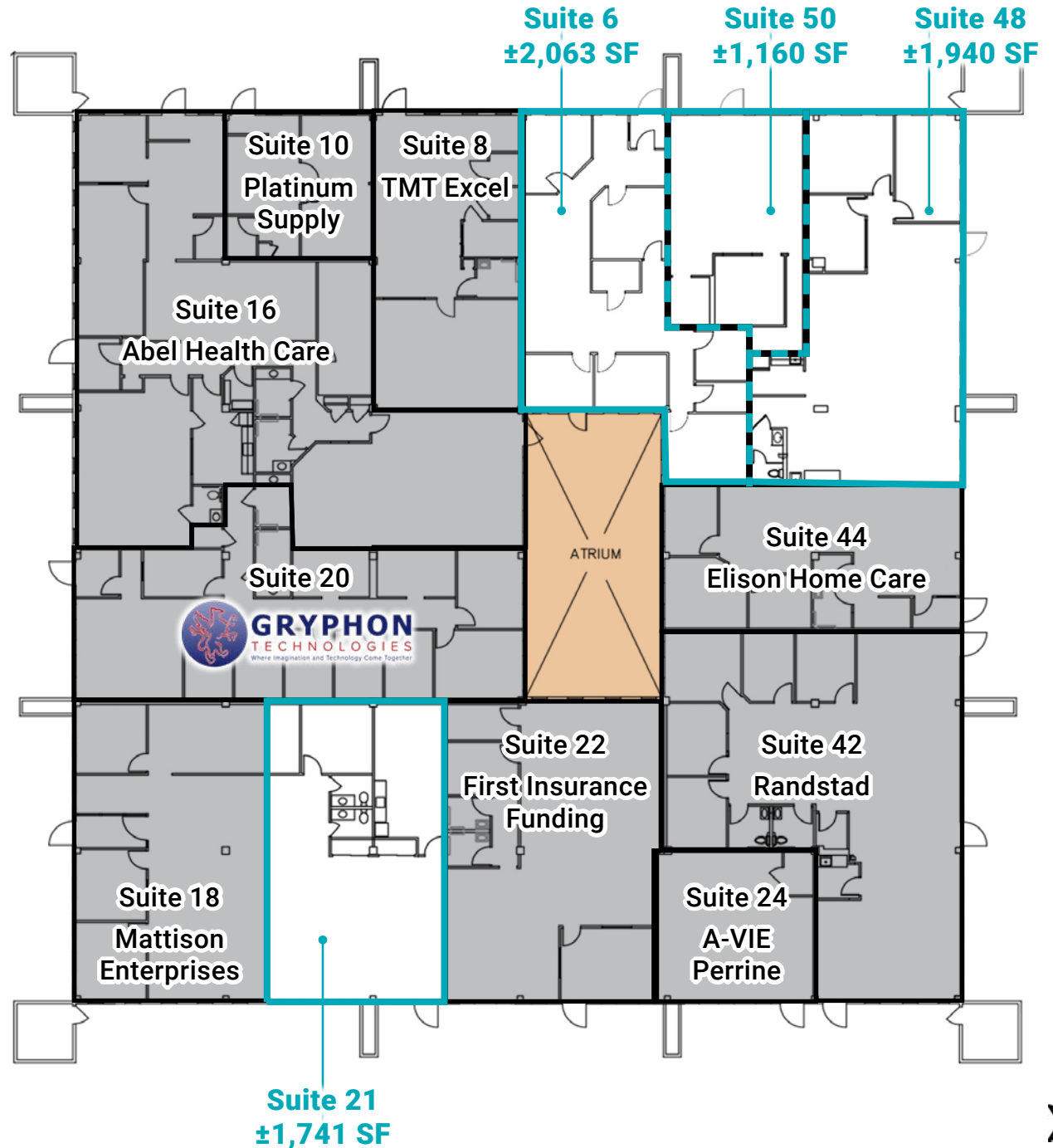




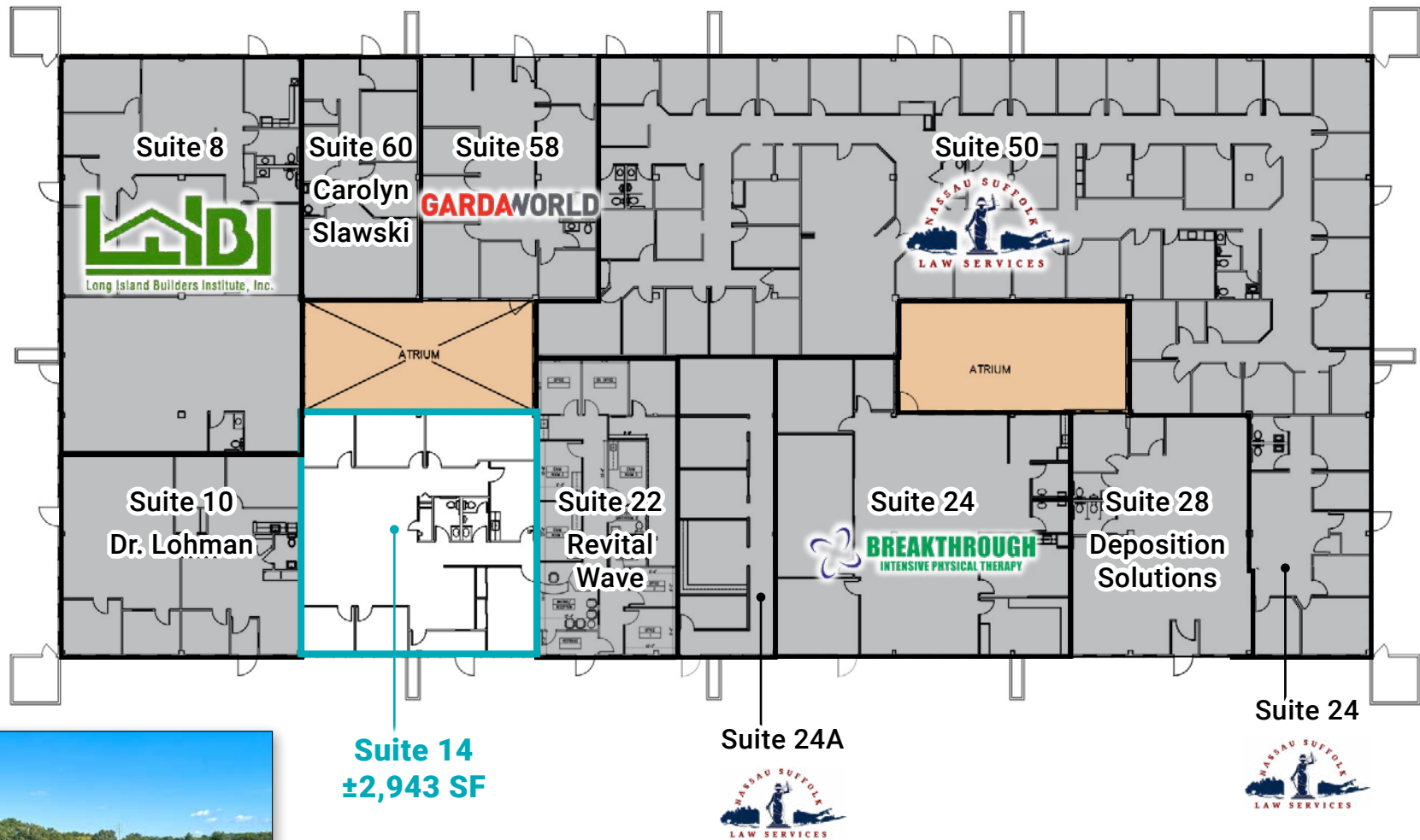
# Building 1747

## Available

Suite 6	±2,063 SF
Suite 50	±1,160 SF
Suite 48	±1,940 SF
<hr/>	
Combined	±5,163 SF



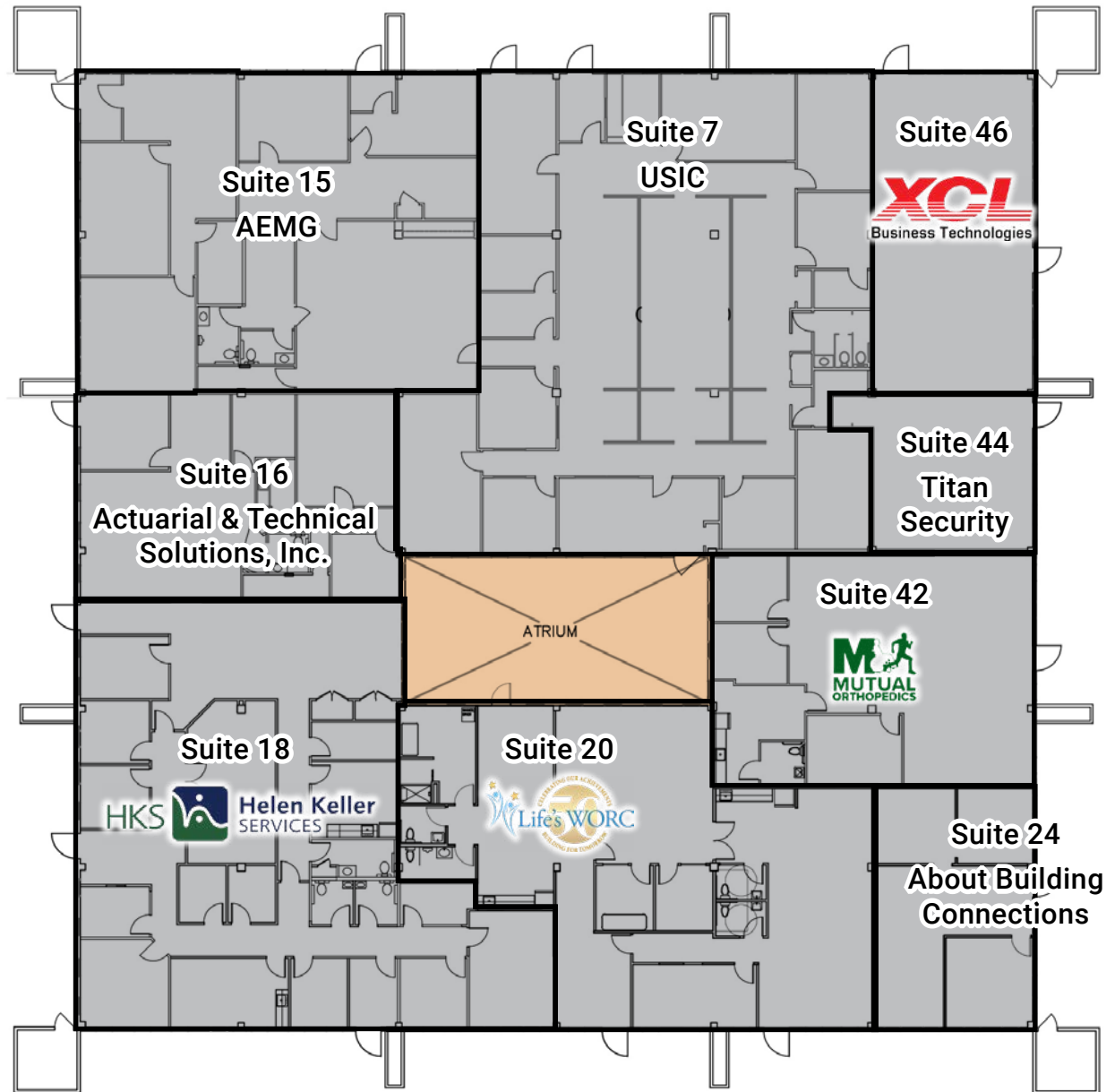
# Building 1757



**Suite 14**  
**±2,943 SF**

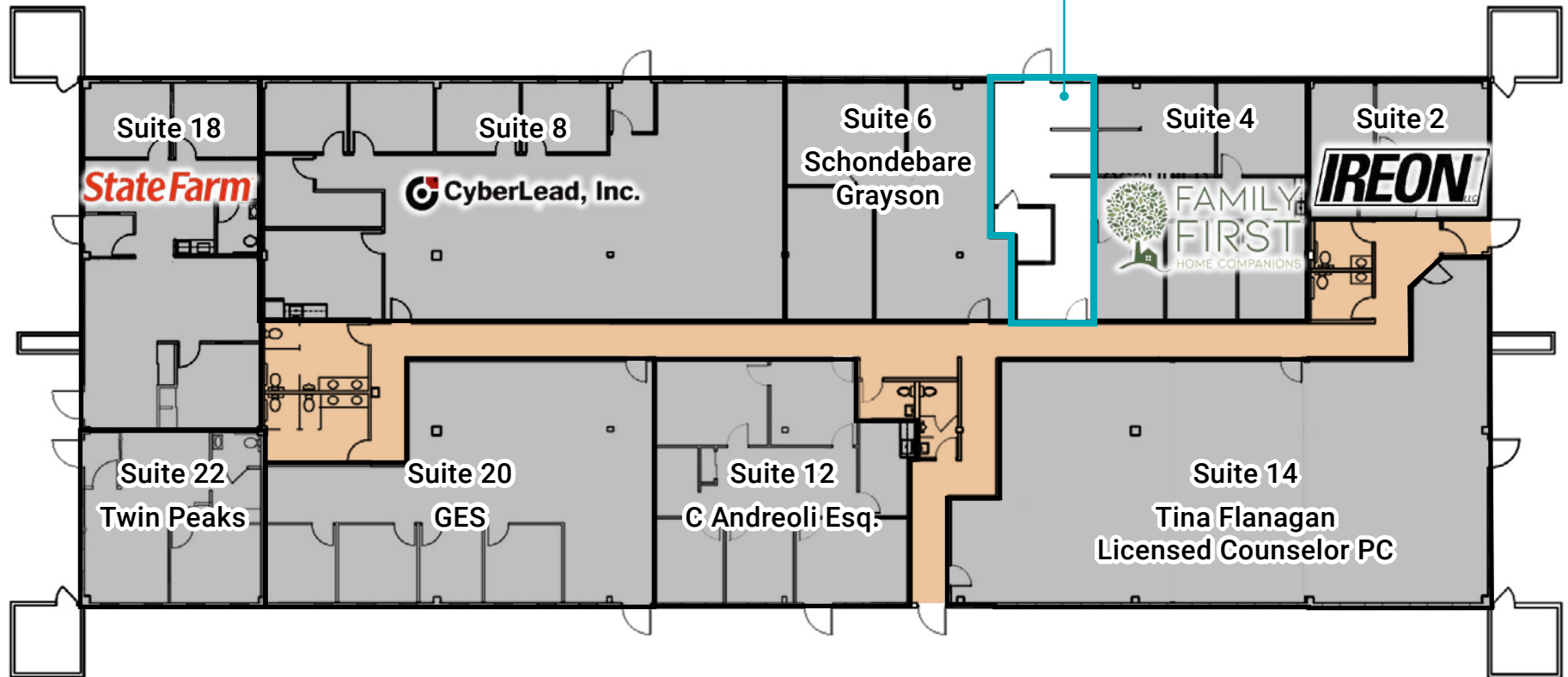


# Building 1767



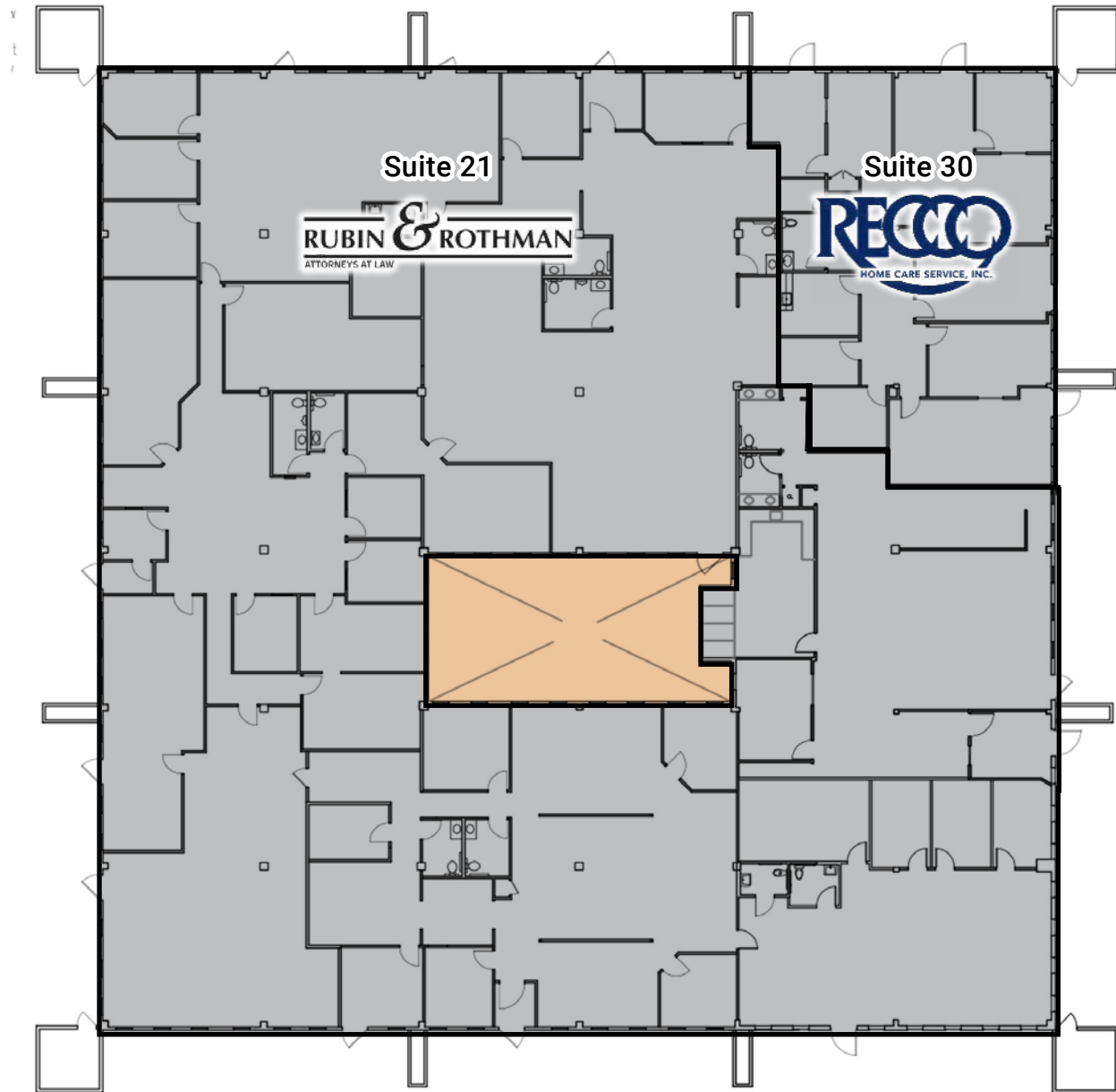
# Building 1777

Suite 5  
±802 SF





# Building 1787



# Building 1797

## Available

Suite 10 ±680 SF

Suite 12 ±550 SF

---

Combined ±1,230 SF

